

Intel® Serial IO Driver

User Guide and Release Note

November 2018

Revision 1.9

Intel Confidential



INFORMATION IN THIS DOCUMENT IS PROVIDED IN CONNECTION WITH INTEL PRODUCTS. NO LICENSE, EXPRESS OR IMPLIED, BY ESTOPPEL OR OTHERWISE, TO ANY INTELLECTUAL PROPERTY RIGHTS IS GRANTED BY THIS DOCUMENT. EXCEPT AS PROVIDED IN INTEL'S TERMS AND CONDITIONS OF SALE FOR SUCH PRODUCTS, INTEL ASSUMES NO LIABILITY WHATSOEVER AND INTEL DISCLAIMS ANY EXPRESS OR IMPLIED WARRANTY, RELATING TO SALE AND/OR USE OF INTEL PRODUCTS INCLUDING LIABILITY OR WARRANTIES RELATING TO FITNESS FOR A PARTICULAR PURPOSE, MERCHANTABILITY, OR INFRINGEMENT OF ANY PATENT, COPYRIGHT OR OTHER INTELLECTUAL PROPERTY RIGHT.

A "Mission Critical Application" is any application in which failure of the Intel Product could result, directly or indirectly, in personal injury or death. SHOULD YOU PURCHASE OR USE INTEL'S PRODUCTS FOR ANY SUCH MISSION CRITICAL APPLICATION, YOU SHALL INDEMNIFY AND HOLD INTEL AND ITS SUBSIDIARIES, SUBCONTRACTORS AND AFFILIATES, AND THE DIRECTORS, OFFICERS, AND EMPLOYEES OF EACH, HARMLESS AGAINST ALL CLAIMS COSTS, DAMAGES, AND EXPENSES AND REASONABLE ATTORNEYS' FEES ARISING OUT OF, DIRECTLY OR INDIRECTLY, ANY CLAIM OF PRODUCT LIABILITY, PERSONAL INJURY, OR DEATH ARISING IN ANY WAY OUT OF SUCH MISSION CRITICAL APPLICATION, WHETHER OR NOT INTEL OR ITS SUBCONTRACTOR WAS NEGLIGENT IN THE DESIGN, MANUFACTURE, OR WARNING OF THE INTEL PRODUCT OR ANY OF ITS PARTS.

Intel may make changes to specifications and product descriptions at any time, without notice. Designers must not rely on the absence or characteristics of any features or instructions marked "reserved" or "undefined". Intel reserves these for future definition and shall have no responsibility whatsoever for conflicts or incompatibilities arising from future changes to them. The information here is subject to change without notice. Do not finalize a design with this information.

The products described in this document may contain design defects or errors known as errata which may cause the product to deviate from published specifications. Current characterized errata are available on request.

Contact your local Intel sales office or your distributor to obtain the latest specifications and before placing your product order.

Copies of documents which have an order number and are referenced in this document, or other Intel literature, may be obtained by calling 1-800-548-4725, or go to: <http://www.intel.com/design/literature.htm%20>

All products, computer systems, dates, and figures specified are preliminary based on current expectations, and are subject to change without notice.

This document contains information on products in the design phase of development. Do not finalize a design with this information. Revised information will be published when the product is available. Verify with your local sales office that you have the latest datasheet before finalizing a design.

Intel processor numbers are not a measure of performance. Processor numbers differentiate features within each processor family, not across different processor families. See www.intel.com/products/processor_number for details.

Code names featured are used internally within Intel to identify products that are in development and not yet publicly announced for release. Customers, licensees and other third parties are not authorized by Intel to use code names in advertising, promotion or marketing of any product or services and any such use of Intel's internal code names is at the sole risk of the user.

Intel and the Intel logo are trademarks of Intel Corporation in the U.S. and/or other countries.

*Other names and brands may be claimed as the property of others.

Copyright © 2018, Intel Corporation. All rights reserved.



Contents

1	Introduction	5
	1.1 Purpose and Scope of Document	5
	1.2 Acronyms and Terminology	5
	1.3 Reference Documents	6
2	Release Kit Summary	7
	2.1 Release Kit Details.....	7
	2.2 Kit Contents	7
3	Driver Installation	8
	3.1 Driver Installation via Installer	8
	3.2 Silent Driver Installation via Installer	13
	3.3 Manual Installation via INF File.....	17
	3.4 Checking the Driver Version.....	18
	3.5 Uninstalling the Driver via Control Panel	21
4	Closed Issues	24
5	Known Issues	26

Figures

Figure 1. Welcome Screen	9
Figure 2. License Agreement.....	10
Figure 3. Driver installs destination folder location	11
Figure 4. Driver components.....	12
Figure 5. Setup Completion	13
Figure 6. Installer Help Information	14
Figure 7. Serial IO Driver - INF files.....	17
Figure 8. Intel® Serial IO GPIO Driver Version	18
Figure 9. Intel® Serial IO I2C Driver Version	19
Figure 10. Intel® Serial IO UART Driver Version	20
Figure 11. Control Panel – Uninstall a program	21
Figure 12. Control Panel – Programs List	21
Figure 13. Welcome to the Uninstallation Program	22
Figure 14. Uninstall Setup Completion.....	23



Revision History

Document Number	Revision Number	Description	Revision Date
N/A	0.7	Alpha Release	December 2015
N/A	0.8	WW16 Release	April 2016
N/A	0.9	WW21 Release	May 2016
N/A	0.91	PC Release	May 2016
N/A	1.0	PV Release	June 2016
N/A	1.1	PV Release – Driver whql'ed for RS1	August 2016
N/A	1.2	HF1 Release	November 2016
N/A	1.3	HF2 Release	April 2017
N/A	1.4	HF3 Release	June 2017
N/A	1.5	HF4 Release	July 2017
N/A	1.6	HF5 Release	November 2017
N/A	1.7	HF6 Release	November 2017
N/A	1.8	HF7 Release	June 2018
N/A	1.9	HF8 Release	November 2018

§



1 Introduction

1.1 Purpose and Scope of Document

This document provides installation instructions and general usage of the driver as well as release information, such as release kit summary, important notes, resolved issues and known issues. This document is intended to help OEM and ODM customers setup their platform as they prepare for validation and debug.

Intel® Serial IO Drivers supports the following operating system and platform:

Operating System:

- Windows* 10 Operating System (64-bit Client version) RS5/RS4

Hardware Requirement:

- Intel® Core™ M Processor.
- Intel® 6th generation Core Platform I/O.
- Intel® 100 Series Chipset Family.
- Intel® 7th Generation Core Platform I/O.
- Intel® 200 Series Chipset Family.

1.2 Acronyms and Terminology

Term	Description
ACPI	Advanced Configuration and Power Interface
AOAC	Always On Always Connected
DMA	Direct Memory Addressing
GPIO	General Purpose IO
I2C	Inter-Integrated Circuit, generically referred to as "two-wire interface"
LPSS	Low Power Sub System (old name for Intel® Serial IO, no longer used)
LTR	Latency Tolerance Reporting
MMIO	Memory Mapped I/O
PIO	Programmed I/O



Term	Description
SPI	Serial Peripheral Interfaces Bus. A synchronous serial data link standard that operates in full duplex mode.
UART	Universal asynchronous receiver/transmitter

1.3 Reference Documents

Document	Location
Skylake Platform Controller Hub (SKL PCH-LP) External Design Specification (ED) – Volumes 1 and 2 of 2	CDI/IBL: 545659 (Volumes 1 of 2) 545845 (Volumes 2 of 2)
Kaby Lake Platform Controller Hub (SKL PCH-H) External Design Specification (ED) – Volumes 1 and 2 of 2	CDI/IBL: 564464 (Volumes 1 of 2) 566449 (Volumes 2 of 2)
Skylake Runtime D3 (RTD3) Hardware and Software Recommendations – Design Guide – Rev. 0.7	CDI/IBL: 543048
Kaby Lake Platform Design Guide (PDG)	CDI/IBL: S – 564041 H – 564042 U/Y – 561280
Skylake and Kaby Lake Platform Controller Hub (PCH), H and LP BIOS Specification	CDI/IBL: 550049



2 Release Kit Summary

2.1 Release Kit Details

Kit Name: Intel(R) Serial IO Driver

Version:

- Serial IO Driver – 30.100.1841.2
 - ialpss2_gpio2_skl
 - ialpss2_i2c_skl
 - ialpss2_spi_skl
 - ialpss2_uart2_skl

2.2 Kit Contents

The contents of this release kit include:

- Intel® Serial IO Unpacked Driver folder – Win10
 - Driver INF files
 - Driver CAT files
 - Driver SYS files
- SetupSerialIO.exe
- Intel Software License Agreement
- Readme file
- WiXLicenseNote

Note: Drivers will not be installed for controllers that are not enabled by BIOS.



3 *Driver Installation*

Note: A supported Operating System must be installed prior to the installation of the Intel® Serial IO Driver.

There are 3 different methods to install the Intel® Serial Driver for this release:

1. Driver Installation via Installer
2. Silent Driver Installation via Installer
3. Manual driver installation via INF

3.1 Driver Installation via Installer

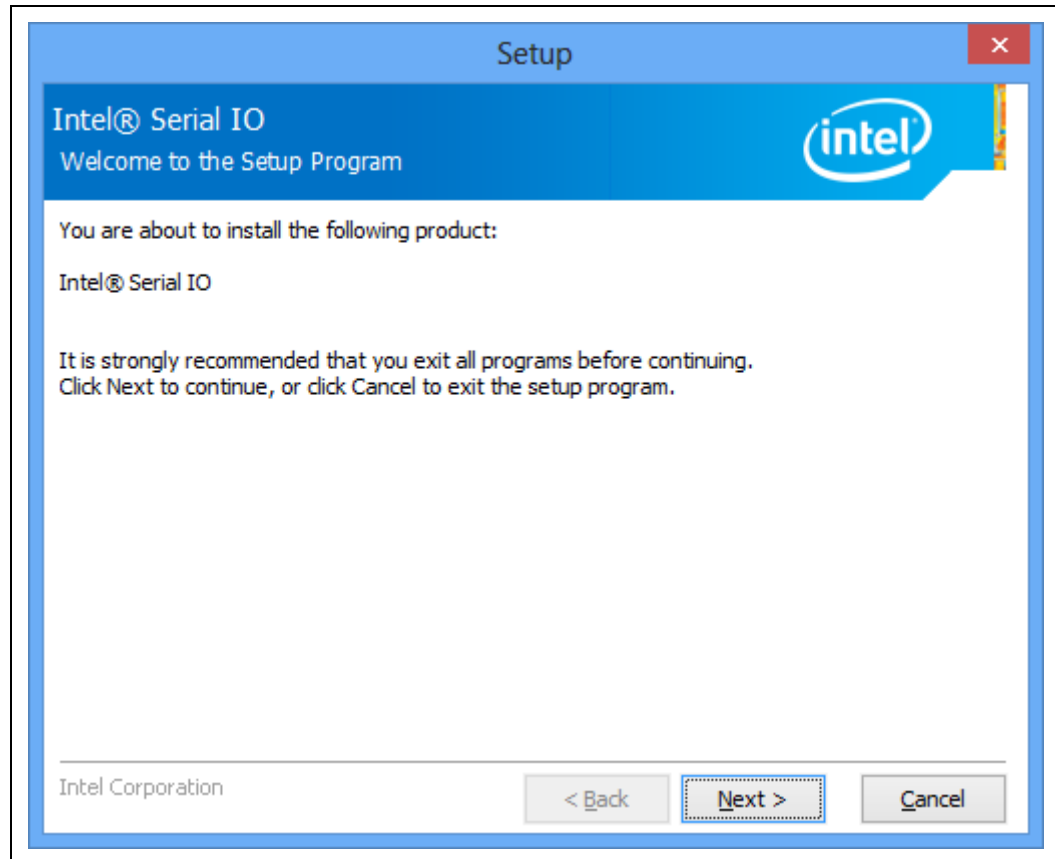
Follow the steps listed below for driver installation via installer:

1. Copy and unzip the Intel® Serial IO Driver onto the Platform under test.
2. Locate the "SetupSerialIO.exe" file.
3. Right click on the executable and select 'Run as administrator' option from the menu to start the installer and then click on 'Yes' button in User Account Control pop-up window.



4. You should see welcome screen with component details as shown in Figure 1. Click 'Next >' button to continue the installation.

Figure 1. Welcome Screen





5. Next, you should see license agreement screen as shown in Figure 2. Please review the license agreement and if you accept the license terms then check the check-box on "I accept the terms in the license Agreement" and click on the "Next >" button to continue the installation.

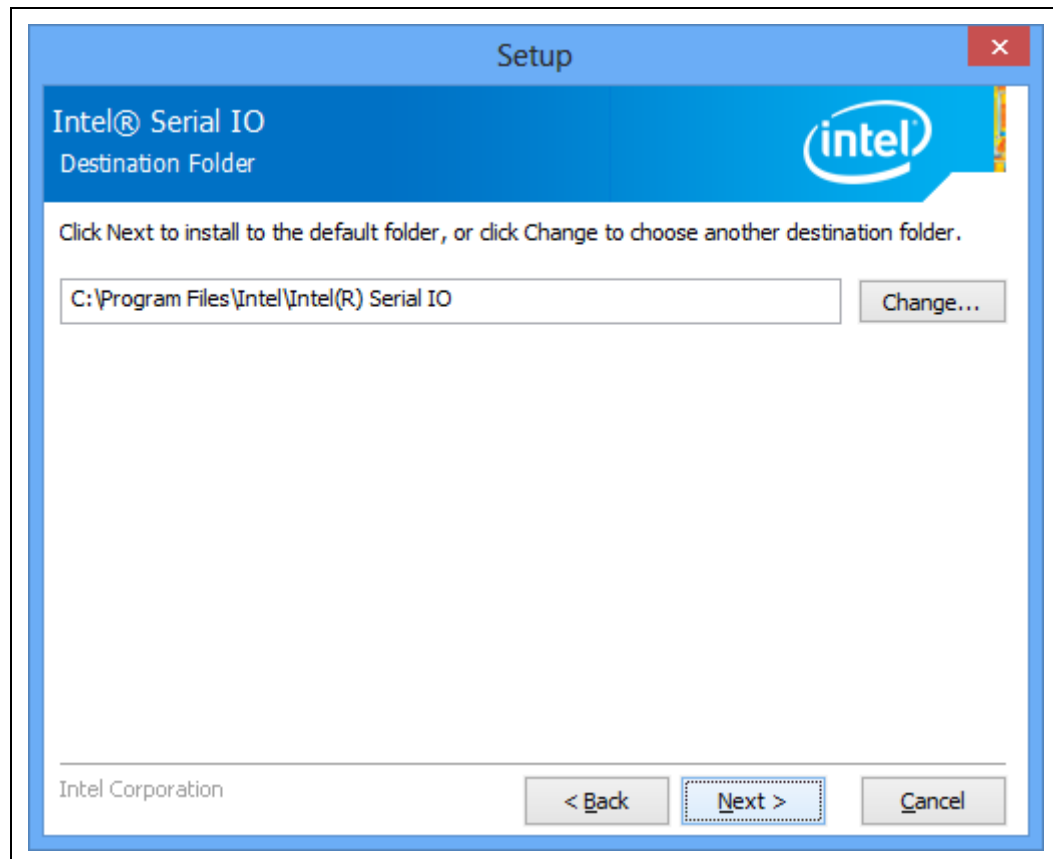
Figure 2. License Agreement





6. Next, you can select the folder location where the driver will be installed. By default, the driver will be installed in c:\program Files\Intel\Intel(R) Serial IO. Click on "Next >" button to continue installation.

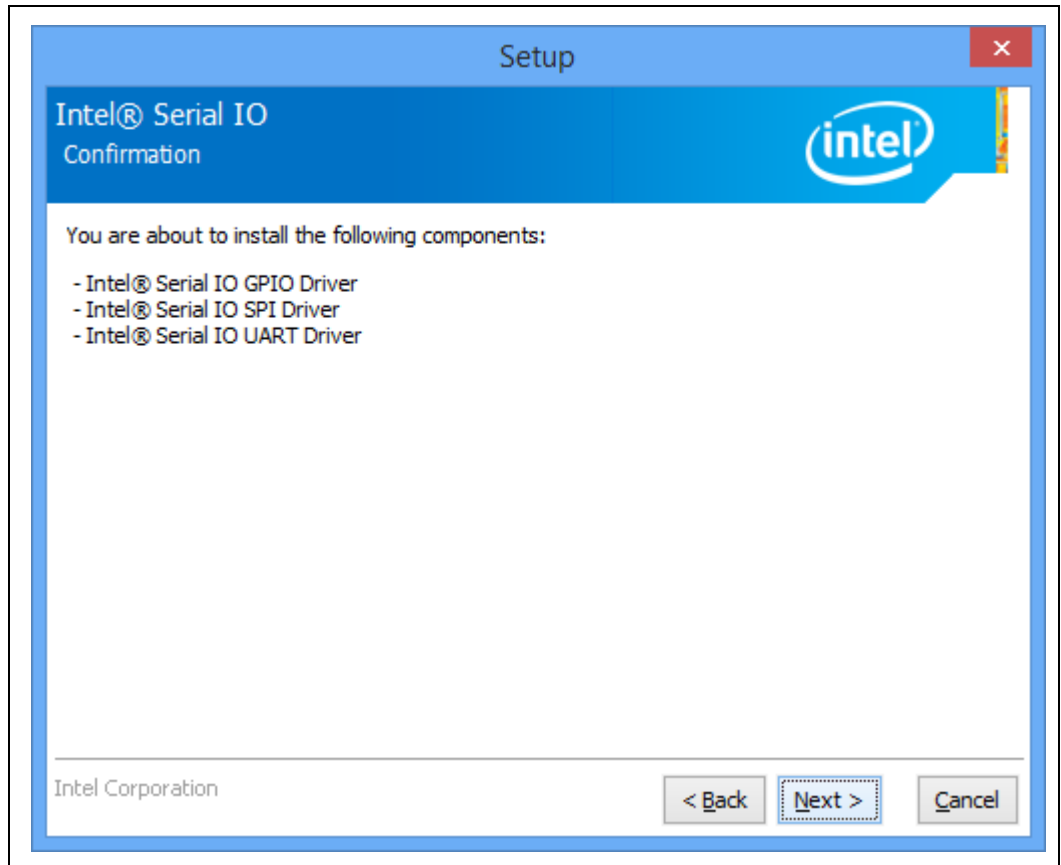
Figure 3. Driver installs destination folder location





7. Next, a list of driver components that will be installed by the installer is displayed. Click on 'Next >' button to continue.

Figure 4. Driver components



Note: Drivers will not be installed for controllers that are not enabled by BIOS.



8. After successful installation, you should see setup completion screen as shown in Figure 5. Click on 'Finish' button to complete the installation.

Figure 5. Setup Completion



3.2 Silent Driver Installation via Installer

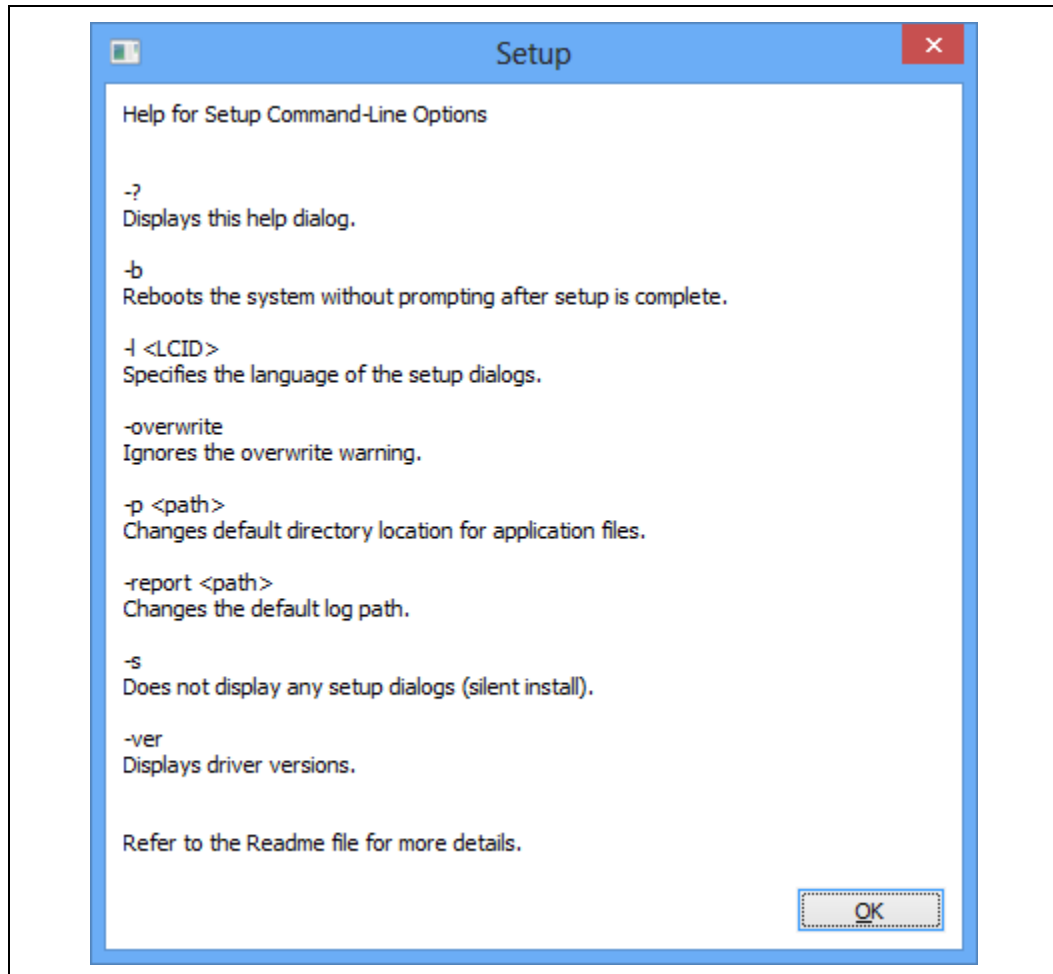
Follow the steps listed below for silent driver installation via installer:

1. Copy and unzip the Intel® Serial IO Driver onto the Platform under test.
2. Open a Command Prompt (cmd.exe) with administrator rights (ie. Run as administrator). Click on 'Yes' button in User Account Control pop-up window.
3. Change the directory to where you unzipped the driver in Step 1 and then change to the "Driver_Installer" directory.
4. To see all available options for the Installer, run command "SetupSerialIO.exe -?" You should see a window pop-up similar to Figure 6. For the "-I <LCID>" option



which specifies the language of the setup dialogs, the LCID list is shown in below table. Click OK to continue.

Figure 6. Installer Help Information



Note: The "-report <path>" option allows users to change where the installation log file is saved. Otherwise, Intel driver installation log files are stored in the general location of 'C:\Users\'User name'\Intel\Logs'.



LCID	Language
0401	Arabic
0804	Chinese (Simplified)
0404	Chinese (Traditional)
0405	Czech
0406	Danish
0407	German
0408	Greek
0409	English (USA)
040A	Spanish
040B	Finnish
040C	French
040D	Hebrew
040E	Hungarian
0410	Italian

LCID	Language
0411	Japanese
0412	Korean
0413	Dutch
0414	Norwegian
0415	Polish
0416	Portuguese (Brazil)
0816	Portuguese (Standard)
0419	Russian
041B	Slovak
0424	Slovenian
041D	Swedish
041E	Thai
041F	Turkish

5. Run command "SetupSerialIO.exe -b -s" to start the silent installation. (Where as x represents the particular version number.) This process should take about 1 min to complete. When silent installation is complete, the system will automatically reboot.
6. After the system has booted, you can refer to section 0 to check the driver version.

Other silent installation examples are:

- > SetupSerialIO.exe -s -overwrite -report C:\Temp
- > SetupSerialIO.exe -s -l 0404



For the installation, a full listing of return values can be found in the following table. The 'Result Code' value can be found at the end of the installation log file.

Result Code	Description
0	Success
3010	Reboot required
1602	User exited
1641	Reboot initiated
1603	Install failure









3.3 Manual Installation via INF File

Follow the steps listed below for driver installation via INF file:

- 1. Copy and unzip the Intel® Serial IO Driver onto the Platform under test.
- 2. Locate the INF files. See Figure 7.
 - a. iaLPSS2_GPIO2_SKL.inf
 - b. iaLPSS2_I2C_SKL.inf
 - c. iaLPSS2_SPI_SKL.inf
 - d. iaLPSS2_UART2_SKL.inf

Figure 7. Serial IO Driver - INF files

 iaLPSS2_Serial_IO_Driver	9/17/2014 8:16 AM	Security Software
 iaLPSS2_GPIO2_SKL.inf	9/17/2014 8:16 AM	Setup Information
 iaLPSS2_I2C_SKL.inf	9/17/2014 8:16 AM	Setup Information
 iaLPSS2_SPI_SKL.inf	9/17/2014 8:16 AM	Setup Information
 iaLPSS2_UART2_SKL.inf	9/17/2014 8:16 AM	Setup Information


- 3. Right click on the INF file and select 'Install' option from the menu to start the installation and then click on 'Yes' button in pop-up window.
- 4. After the installation of all the drivers, reboot the system



3.4 Checking the Driver Version

To check the Intel® Serial IO Driver version, follow the below instructions:

1. Open Device Manager.
2. Double click on the device you want.
3. Select the "Driver" tab and the Driver Version will be listed.

Figure 8. Intel® Serial IO GPIO Driver Version

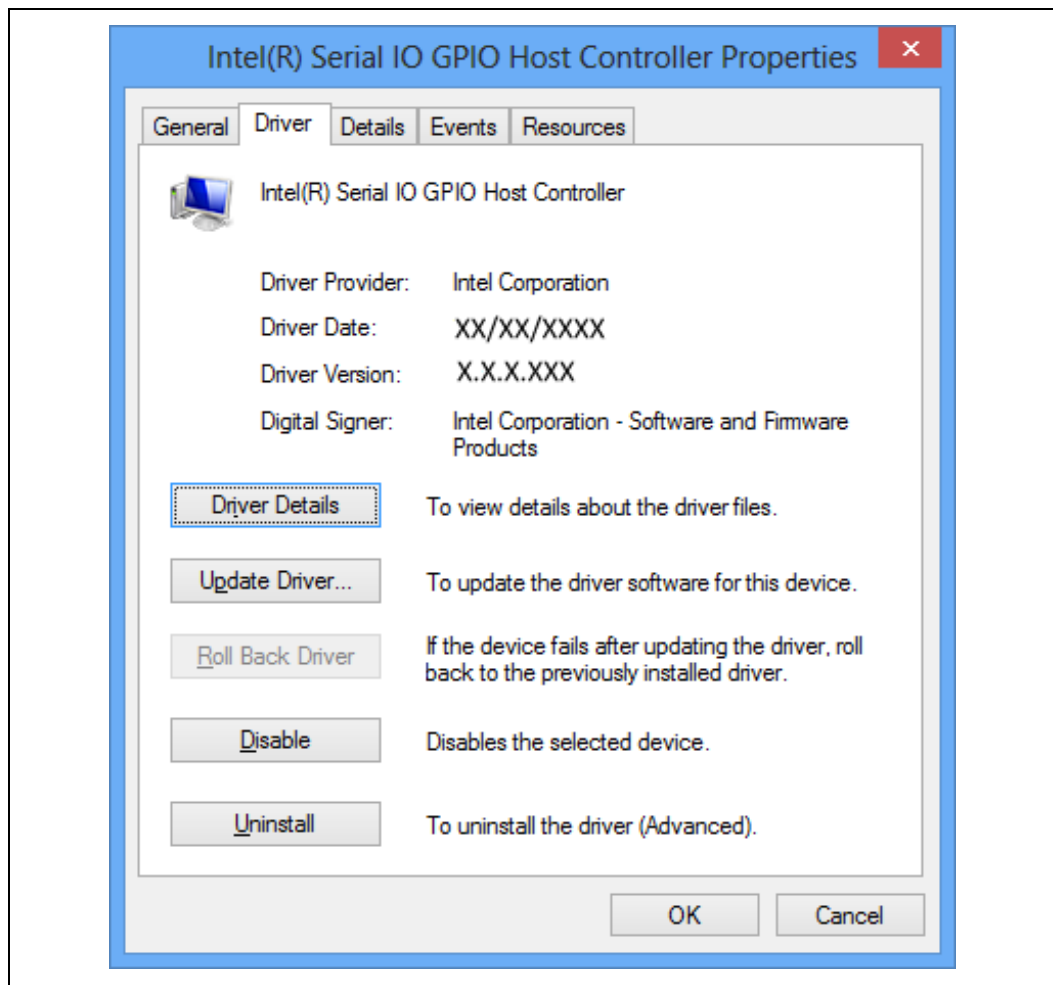
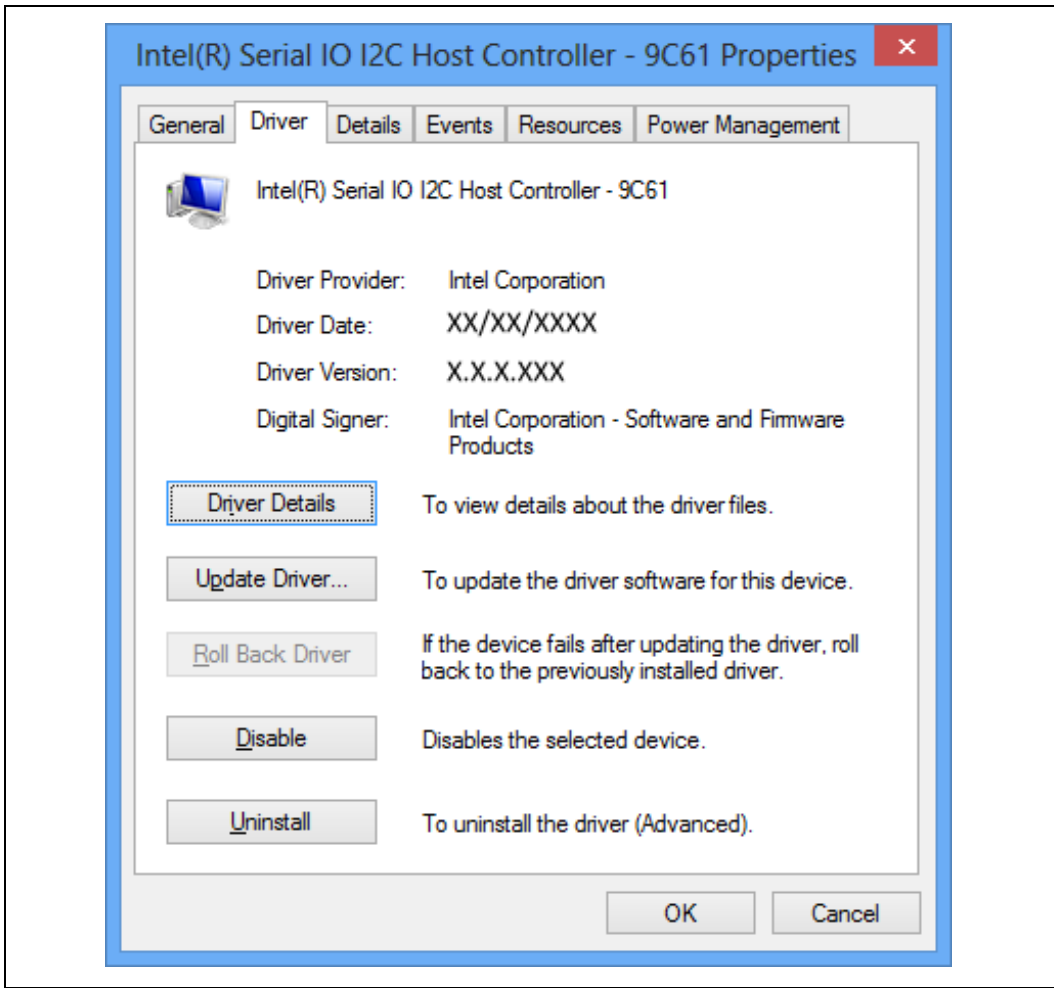




Figure 9. Intel® Serial IO I2C Driver Version



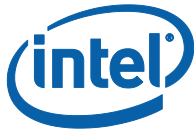
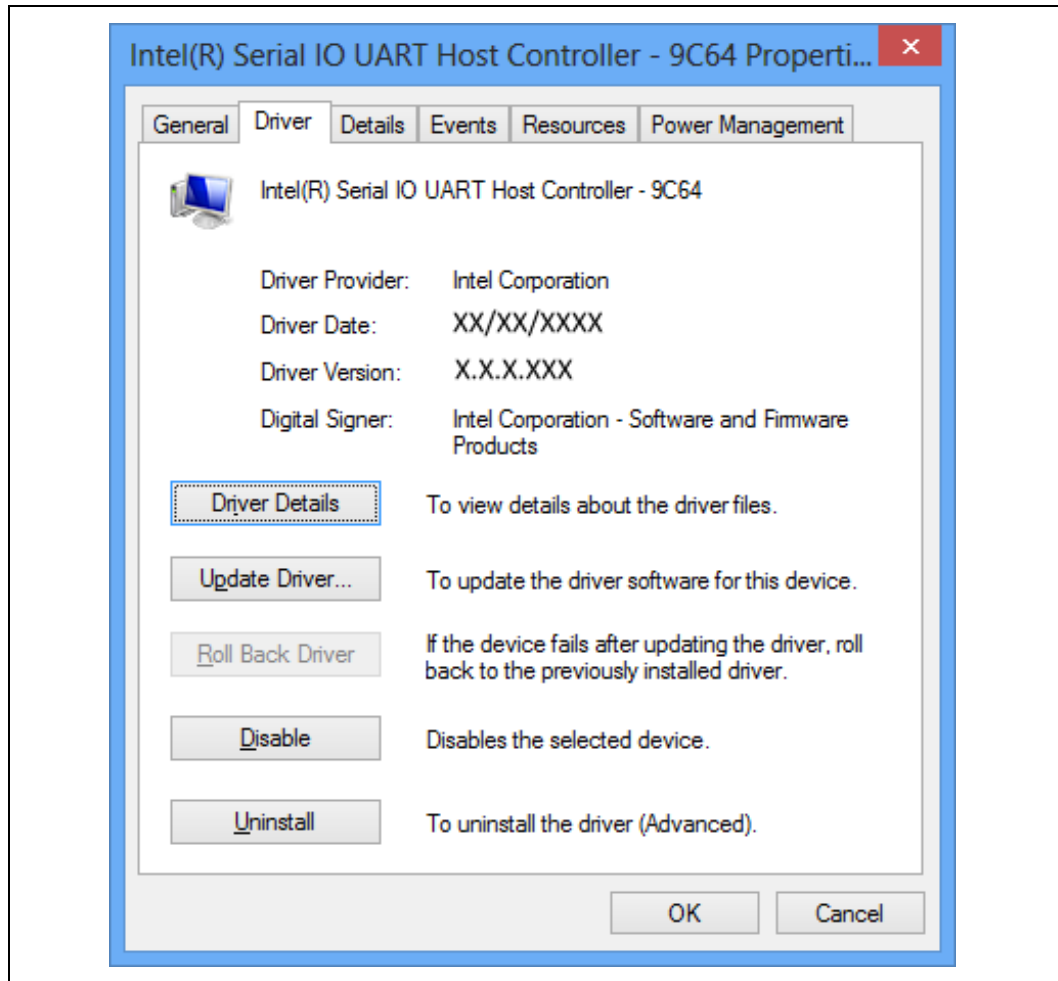


Figure 10. Intel® Serial IO UART Driver Version





3.5 Uninstalling the Driver via Control Panel

Follow the steps listed below to uninstall the driver via the Control Panel:

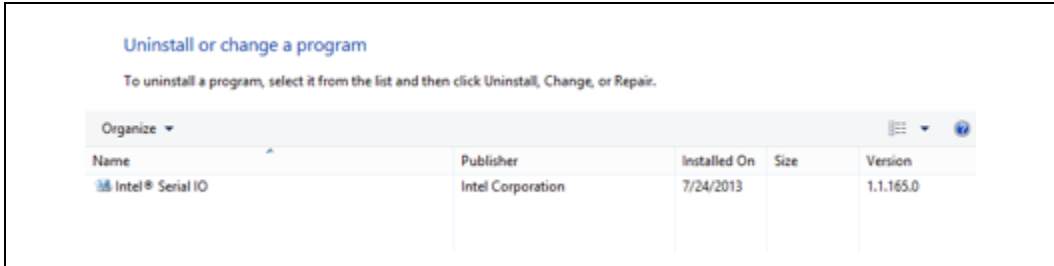
- 1. Open the Control Panel window.
- 2. If the Control Panel window is shown in 'Category' view, then select "Uninstall a program" as shown in Figure 11. Otherwise if the Control Panel window is shown in 'icon' view, then select "Programs and Features".

Figure 11. Control Panel – Uninstall a program



- 3. On the next window, select the "Intel® Serial IO Driver" (see Figure 12) from the list of programs. Then click the "Uninstall" button.

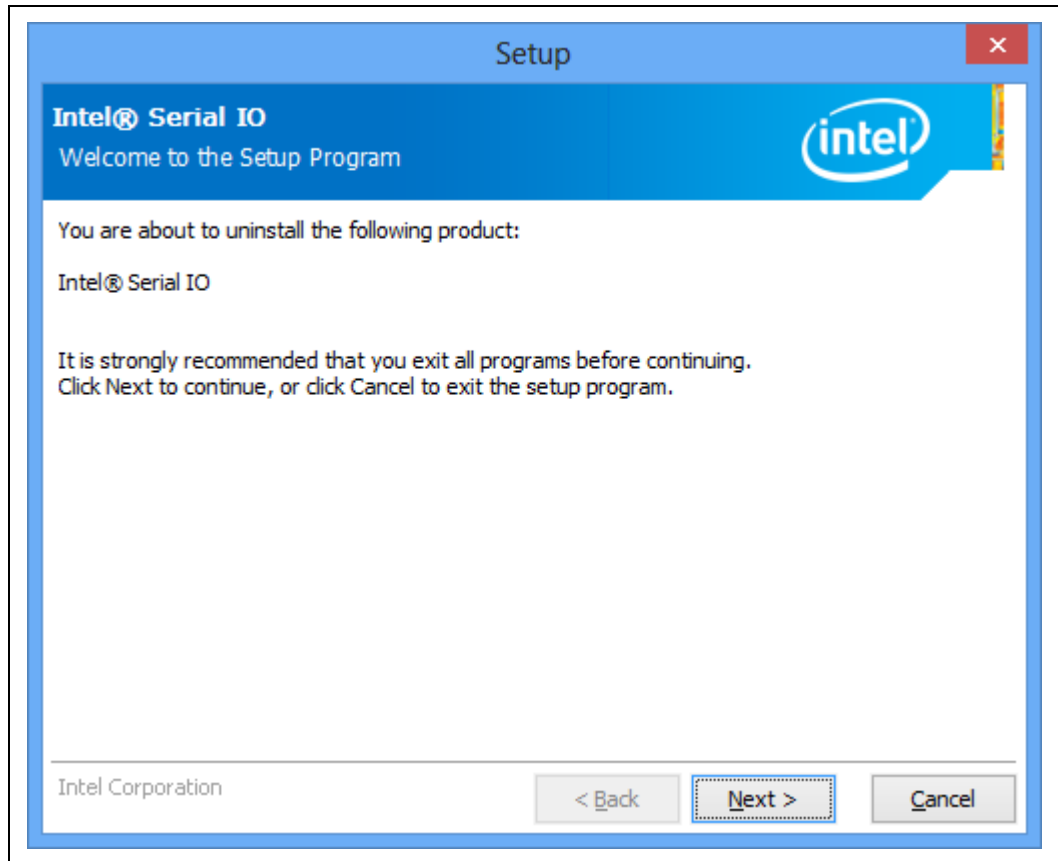
Figure 12. Control Panel – Programs List





4. You should see the Welcome to Uninstallation Program pop-up window with component details as shown in Figure 13. Click 'Next >' button to continue.

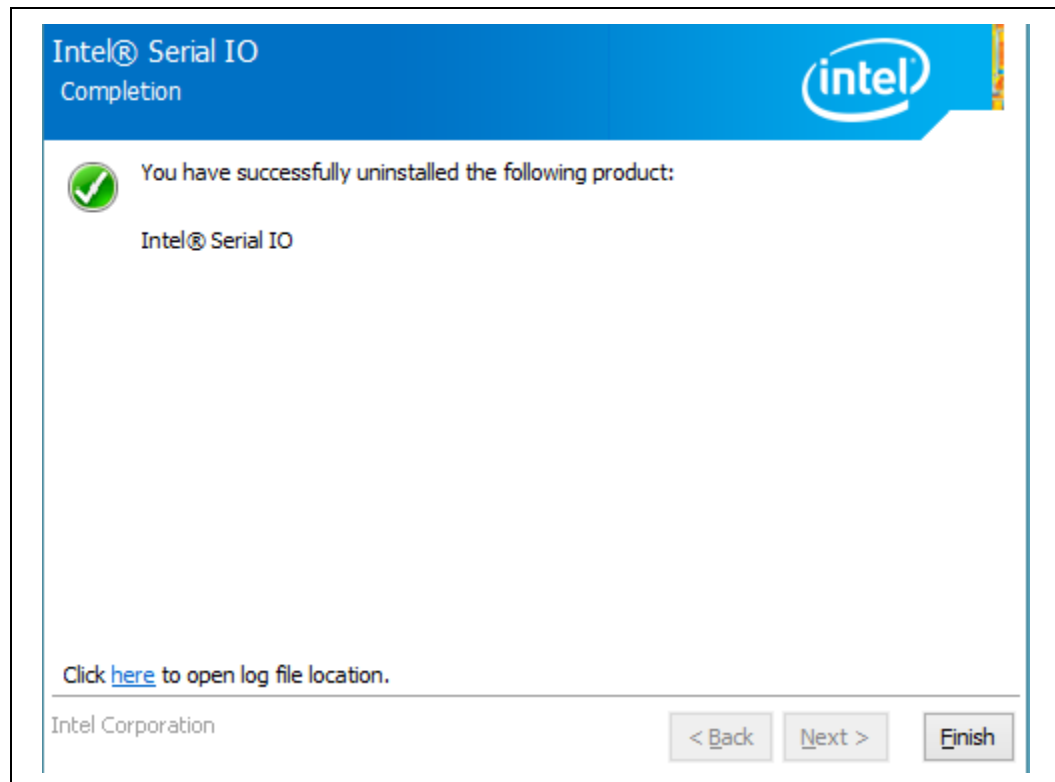
Figure 13. Welcome to the Uninstallation Program





5. Next, installer will perform various operations and show progress in Uninstallation Progress screen. When the uninstall process is completed, you should see screen as shown in Figure 14. Click on 'Finish' button to restart the system.

Figure 14. Uninstall Setup Completion



§



4 Closed Issues

Issue #	Description	Resolution
N/A	Added certification for Windows* 10 RS5 build (whql).	Resolved in HF8 release 30.100.1841.2
1406749639	UART: Added support for BIOS DSM function to configure the UART controller mode.	Resolved in HF7 release 30.100.1823.1
N/A	Added certification for Windows* 10 RS4 build (whql).	Resolved in HF7 release 30.100.1823.1
N/A	Added support for Coffee Lake Platforms	Resolved in HF6 release 30.100.1746.4
N/A	Added certification for Windows* 10 RS3 build (whql).	Resolved in HF5 release 30.100.1725.1
220239454	SPI/UART: SPI/UART Device may yellow bang or cause system hang during power cycling testing.	Resolved in 30.100.1725.1
220239454	I2C: I2C Device may yellow bang or cause system hang during power cycling testing.	Resolved in 30.100.1724.2
1604309642	GPIO: SD card may fail to detect after resuming from Hybrid Sleep.	Resolved in 30.100.1724.2
1504510746	Installer: hardened Installer code.	Resolved in 30.100.1724.2 (Installer version 2.3.2605.0)
1209714121	Installer: Hotkeys (Alt+F) function does not work at the end of the driver installation windows.	Resolved in 30.100.1713.2 (Installer version 2.3.2603.0)
1209818842	Installer: When running driver installation on an OS with Arabic language, the right side wording of the license agreement is stuck on the installation windows.	Resolved in 30.100.1713.2 (Installer version 2.3.2603.0)
1208819857	UART: Added support for NewDataNotification event callback function.	Resolved in 30.100.1643.01
N/A	Added certification for Windows* 10 RS1 build (whql).	Resolved in 30.100.1633.03
N/A	Removed support for Windows* 8/8.1 OS.	Resolved in 30.100.1633.03
1504280148	GPIO: Added save/restore capability	Resolved in 30.100.1633.03

Closed Issues

Issue #	Description	Resolution
10071166	Installer: Installer will fail to install the driver if OS account user name has a space	Resolved in 30.63.1620.03 (Installer version 2.2.20)
N/A	GPIO: Fix incorrect IRQL level	Resolved in 30.63.1620.03
1504237912	GPIO: BSOD may occurs when GPIO controller is enabled and disabled in the OS.	Resolved in 30.63.1620.01
1504156602	GPIO: Add spinlock to avoid race condition in the driver.	Resolved in Release 30.63.1611.16
1404677600	GPIO: driver initializes the GPP_IE register and pin information when resuming from S3/S4 power state.	Resolved in Release 30.63.1611.16

§



5 Known Issues

Issue #	Description
N/A	

§